

Tidal Marsh

Burgess Residence

126 Moss Creek Drive (Mail)
55A MOSS CREEK (Legal)



Moss Creek Plantation is one of the premiere golf communities in the Hilton Head Island area. Conveniently located at the foot of the bridge to Hilton Head, this 1,068 acre community offers 2 championship Tom Fazio designed courses, a wonderful Clubhouse and a package of amenities to include tennis, biking, swimming, boating, and fishing.

The Burgess home sits on a spectacular marsh view lot with sweeping sunrise views across the tidal marsh. Moss-draped live oaks and an easy-to-care-for landscaping plan surround the home.

This home was designed by long-time Lowcountry architect, Steve Carson, and Johnson-Dulaney Builders was chosen to execute those plans. The finest in materials and craftsmanship combine to create a solid, well-built home with exterior walls of hardcoat stucco, Hurd clad windows, hardwood floors, and a full array of plantation shutters. These are only a sample of the quality construction.

At the entry, a concrete circular driveway defined by brick edging offers generous off-street parking. Extensive landscaping surrounds the house. Savannah gray brick entry stairs lead to a covered entry porch defined by arches and columns. The porch floor is in Savannah gray brick and leads to a leaded and beveled glass entry door, flanked and topped by sidelights and a transom window.



This information is believed to be accurate but is subject to verification by all parties.

Step inside to the foyer defined by accent columns and notice the real hardwood floors that run throughout the



common living areas of the home. To the left is a formal dining room, defined by columns, with a built-in serving buffet, linen storage and twin china cabinets with interior halogen lighting. A granite top accents the serving buffet. The foyer opens to a great room with a high ceiling and twin arches that open to the view. Along one side of the great room is a brick gas fireplace with glass doors and traditional mantel surround. There is a wall of built-ins, including a bar,



bookcases, entertainment center, and lots of base cabinet storage. The house is wired for the latest in video technology. Through the twin arches, the wood floors give way to a Carolina room with a tile floor. This sunny room is presently used as a music room. There are wonderful fixed glass and transom windows that wash the room in natural light. Note the extensive use of crown molding and heavy



base molding. Conveniently located off the foyer is a half-bath powder room with silent flush toilet and chandelier.



The kitchen is a chef's delight with lots of easy-to-care-for laminate cabinetry and a full complement of appliances to include double GE self-cleaning ovens, Whirlpool dishwasher, KitchenAid surface range, GE Spacemaker microwave,

and Whirlpool double door refrigerator with thru-the-door water and ice. An overhead skylight washes the room in natural light. There is a large pantry, built-in desk, breakfast bar and the kitchen opens to a breakfast room overlooking the pool and view.



and Whirlpool double door refrigerator with thru-the-door water and ice. An overhead skylight washes the room in natural light. There is a large pantry, built-in desk, breakfast bar and the kitchen opens to a breakfast room overlooking the pool and view.

The bedroom configuration in this home is ideal. The master bedroom is privately located at one end of the

house and is oversized with generous space for furniture placement. Note the interesting octagonal tray ceiling. There is easy access from the master bedroom to the pool area. The master bath is modern by all standards. There is a double his and her vanity in a separate room with extensive base cabinetry. Pocket doors lead to the bath area with a deep soaking tub, all-tile stall shower, private European style water closet, and



linen storage. His and her closets are oversized with double rod and shelving.

Three additional bedrooms are located at the opposite end of the home. With its double doors, the middle bedroom serves as an office but also as a 4th bedroom with easy access to a shared bath. There are 2 spacious guest bedrooms, nicely separated, and each with bay windows, private en suite baths and generous closet space. Bay windows give interesting shapes to the rooms. Notice the interesting beadboard wainscoting and the walk-in closet.



Off the kitchen is a convenient utility room with a deep sink, entry closet and Whirlpool washer and dryer. Nearby is an oversized 2-car garage with workshop space, storage cabinetry and room for golf clubs and hats.

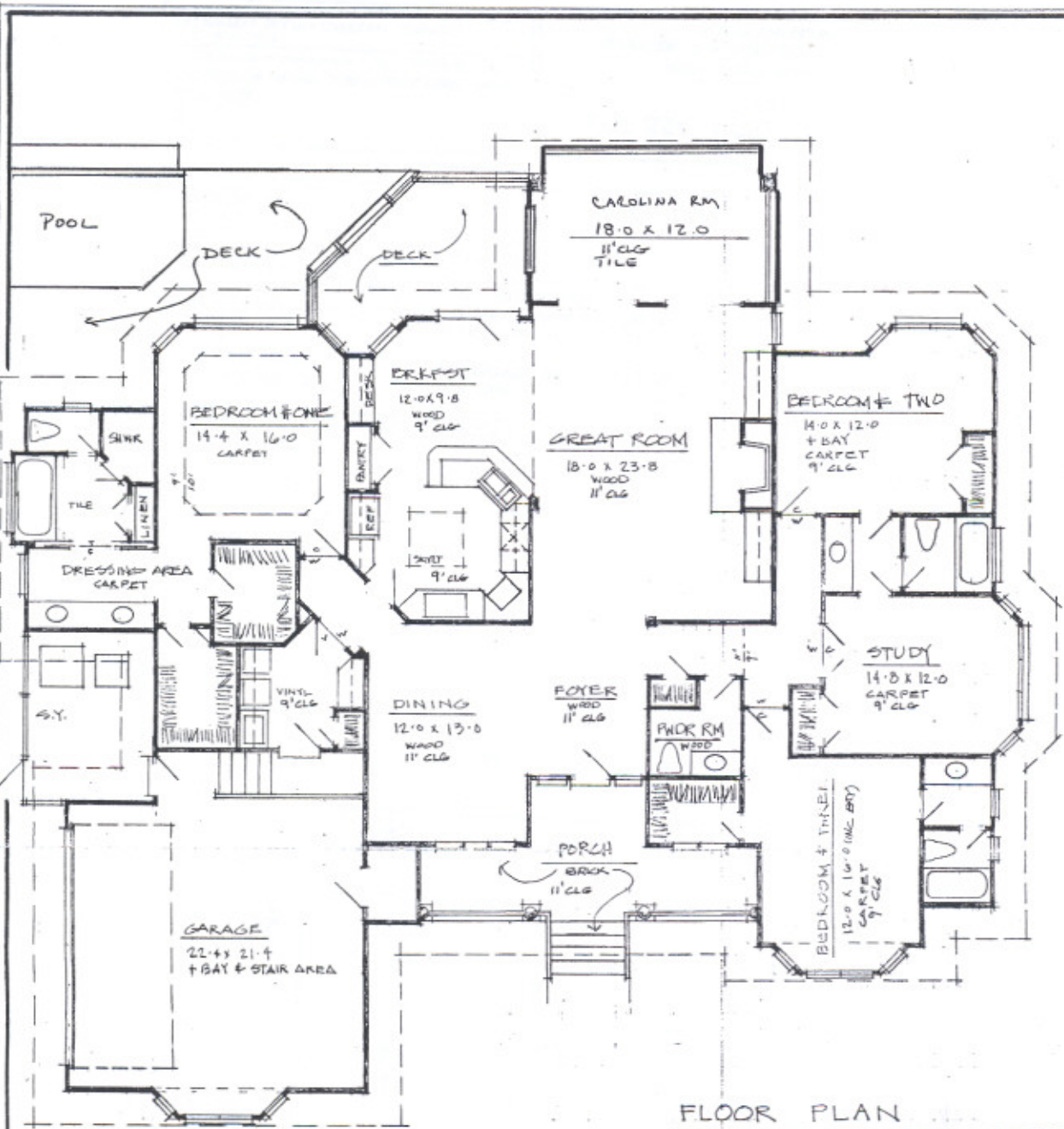
To the rear of the home and with easy access from the great room, master bedroom, and kitchen areas is a 2-level wood deck with a negative edge self-cleaning pool. The deck is spacious for entertaining, alfresco dining, or lounging about the pool. The deck overlooks the beautifully manicured landscaped rear grounds with the moss-draped oaks framing the distant sweepings views of the tidal marsh.



Notable features of this fine home include Johnson-Dulaney quality construction, hardcoat stucco, 2-zone HVAC system, Hurd clad window system, thermopane windows, removable storm shutter system, negative edge pool, smooth sheetrock ceilings,

real tongue and groove nailed down hardwood flooring, gas fireplace, wet bar, entertainment center, sun room, extensive plantation shutters, brick accent pavers, extensive columns, arches and molding, 2-zone water heating system, huge floored attic, circular concrete drive, gutter helmets, and central vacuum cleaning system.





FLOOR PLAN

1/8" = 1'-0"

HEATED AREA = 3010 SF

BURGESS RESIDENCE
 PRELIMINARY # ONE
 MARCH 3, 1997
 ©1997 WS CARSON, ARCHITECT

MAR - 4 1997

wsCarson Architect